

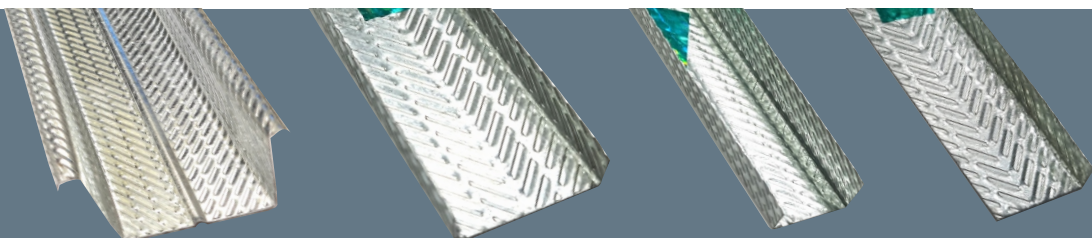


*Diamond Frames*™  
False Ceiling & Partition Systems

# Metal Profile

## Technical & Safety Data Sheet

*Diamond Frames* **PREMIUM**®



## Introduction

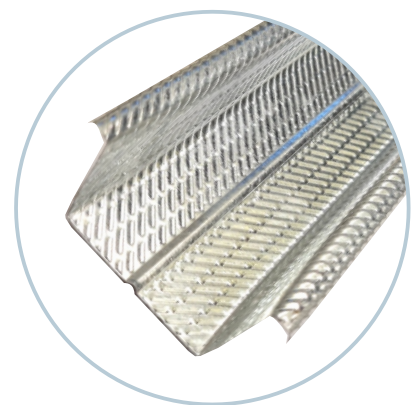
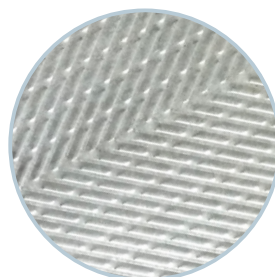
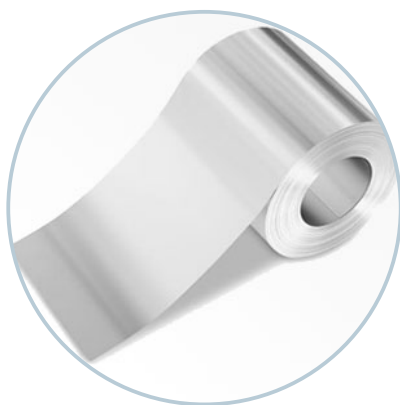
**Diamond Frames Premium** employs a manufacturing process that transforms the characteristics of plain steel, providing higher strength capacity at a lighter gauge. The process effectively strengthens the steel by working in striations with two mating rolls, which produce a serrated surface and a ribbed pattern across the surface.

Once the Premium process has been applied, the base material is then passed through a series of rollers which progressively transform the steel into the required frame. The number of rollers in the process will vary, depending on the complexity of the frame being rolled.

Service entries or passages are punched at the end of this process. The ribbed pattern helps to increase the depth and surface area of the frame. Therefore, providing better strength and durability.

Diamond Frames have been offering creative & durable products, allowing us to extend our partnerships beyond business and which fuels better insights and ideas that make us stand out in a marketplace and, ultimately build brand strategies that endure.

We have branded ourselves to reflect our expanded capabilities and give us space to celebrate the vibrant relationships we have with each of our clients.



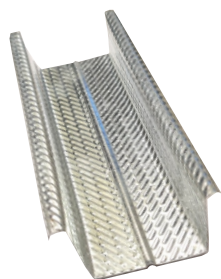
# Product Data Sheet

## PDS DFPL-CHE-PREMIUM

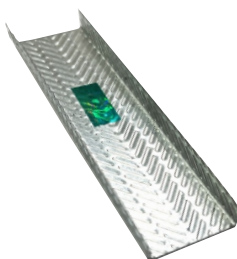


**Diamond Frames**™  
False Ceiling & Partition Systems

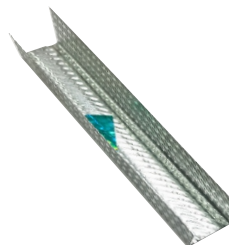
### Diamond Frames Premium Suspended Ceiling Systems



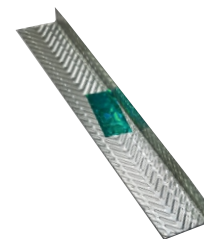
DF-GI-Ceiling Section Premium



DF-GI-Intermediate Channel Premium



DF-GI-Perimeter Premium



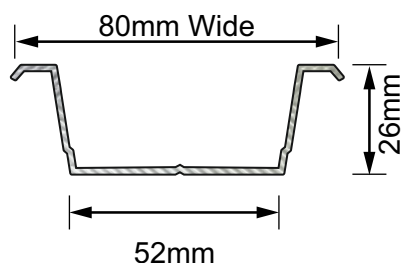
DF-GI-Ceiling Angle Premium

Product Description		Width mm	Thickness mm	Lengths Feet	Weight kg
DF-GI-Ceiling Section Premium		80	0.55	12	1.890
DF-GI-Intermediate Channel Premium		45	0.90	12	1.850
DF-GI-Perimeter Premium		27	0.55	12	1.130
DF-GI-Ceiling Angle Premium		10	0.55	12	0.560

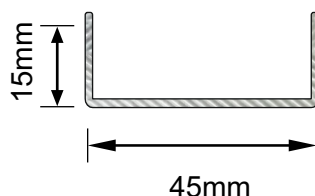
\* Thickness variation may occur .05mm (Plus or Minus) lot to lot

\* Weight variation may occur 3% (Plus or Minus) lot to lot

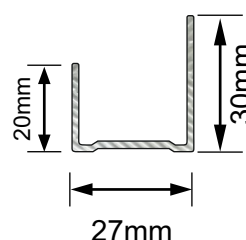
### Diamond Frames Premium Suspended Ceiling Systems Profile



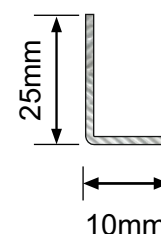
Ceiling Section



Intermediate Channel



Perimeter Channel



Ceiling Angle